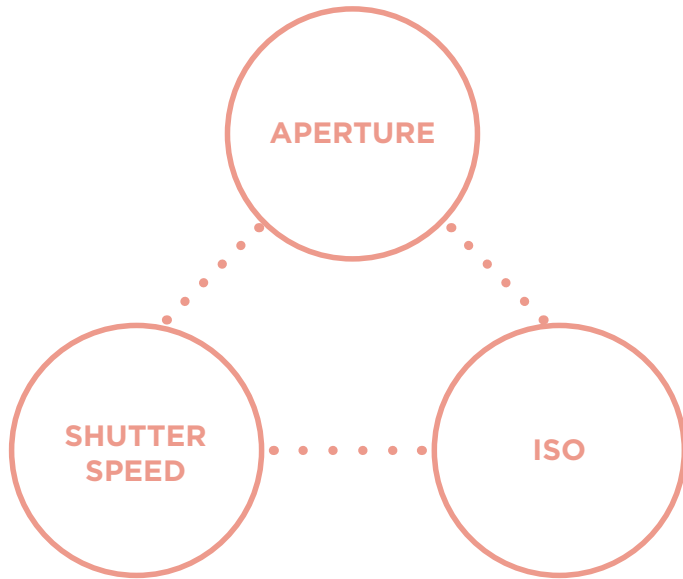


EXPOSURE TRIANGLE

photograph the everyday



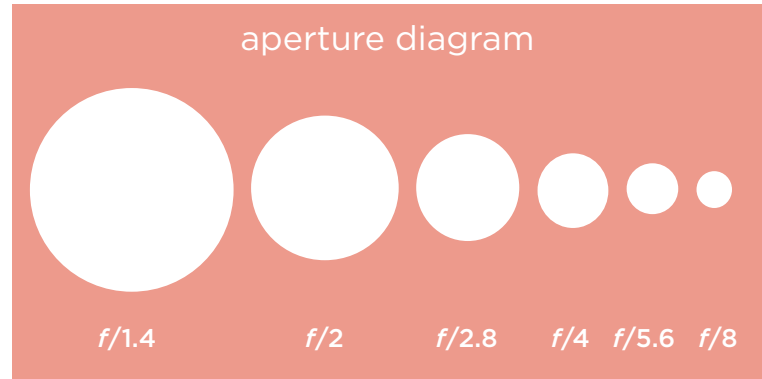
MAKING SENSE OF MANUAL MODE

© CLICK IT UP A NOTCH

APERTURE

photograph the everyday

Aperture = is the hole in your lens that light travels through.



MAKING SENSE OF MANUAL MODE

© CLICK IT UP A NOTCH

APERTURE

photograph the everyday

SHOOTING WIDE OPEN

Lower number = less in focus & more light



f/1.4

MAKING SENSE OF MANUAL MODE

© CLICK IT UP A NOTCH

APERTURE

photograph the everyday

SHOOTING DOWN

Higher number = more in focus & less light



f/11

MAKING SENSE OF MANUAL MODE

© CLICK IT UP A NOTCH

APERTURE

photograph the everyday

MULTIPLE SUBJECTS



DIFFERENT FOCAL PLANE

f/3.2



SAME FOCAL PLANE

f/3.2

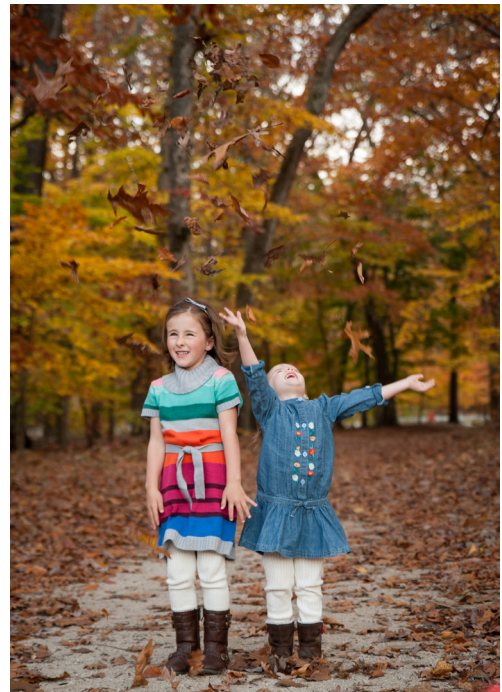
MAKING SENSE OF MANUAL MODE

© CLICK IT UP A NOTCH

SHUTTER SPEED

photograph the everyday

Shutter Speed = how long your shutter will be open.



MAKING SENSE OF MANUAL MODE

© CLICK IT UP A NOTCH

SHUTTER SPEED

photograph the everyday

Photographing a moving subject then set at least at 1/125 or faster
Higher number = less light & freezes motion



ss 1/500



ss 1/800

MAKING SENSE OF MANUAL MODE

© CLICK IT UP A NOTCH

SHUTTER SPEED

photograph the everyday

Show movement with a lower shutter speed.
Be sure to use a tripod or sturdy surface.
Lower number = more light & blurs motion



ss 1/4



ss 1/30

MAKING SENSE OF MANUAL MODE

© CLICK IT UP A NOTCH

ISO

photograph the everyday

ISO will bring more light into your image

Think of them as worker bees.

ISO 200 is like sending 200 bees to get light

ISO 1600 is like sending 1600 bees to get light.

Higher number ISO = More light



ISO 3200

MAKING SENSE OF MANUAL MODE

© CLICK IT UP A NOTCH

ISO

photograph the everyday

Outside during the daytime -

keep ISO pretty low



ISO 100

MAKING SENSE OF MANUAL MODE

© CLICK IT UP A NOTCH

ISO

photograph the everyday

Nighttime low light - Increase ISO



ISO 12,800

MAKING SENSE OF MANUAL MODE

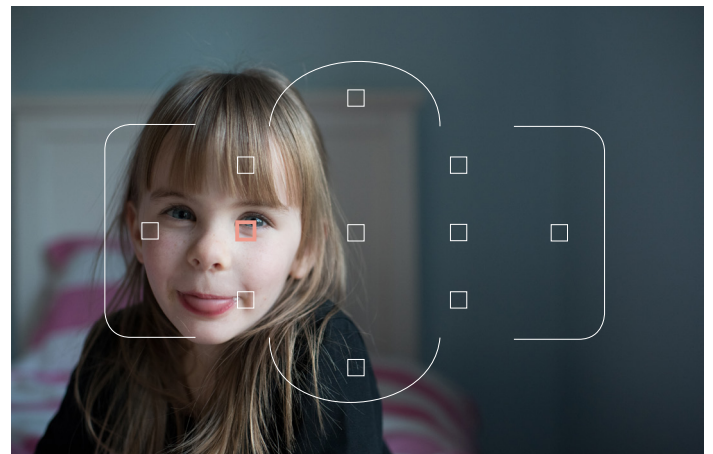
© CLICK IT UP A NOTCH

FOCAL POINT

photograph the everyday

Use Single Point AF or One Shot AF

Place focal point on eye



MAKING SENSE OF MANUAL MODE

© CLICK IT UP A NOTCH

WHITE BALANCE

photograph the everyday

Adjusting the color balance in your image so it's true to what your eye sees.



MAKING SENSE OF MANUAL MODE

© CLICK IT UP A NOTCH

WHITE BALANCE

photograph the everyday

Custom white balance



1. Meter off subject to set ISO, shutter speed, & aperture
2. Set camera on custom white balance (may be called "preset")
3. Set lens to manual focus
4. Fill frame with gray card
5. Take a picture in the same light as subject
6. Check your camera if it worked
7. Switch lens back to auto focus

MAKING SENSE OF MANUAL MODE

© CLICK IT UP A NOTCH

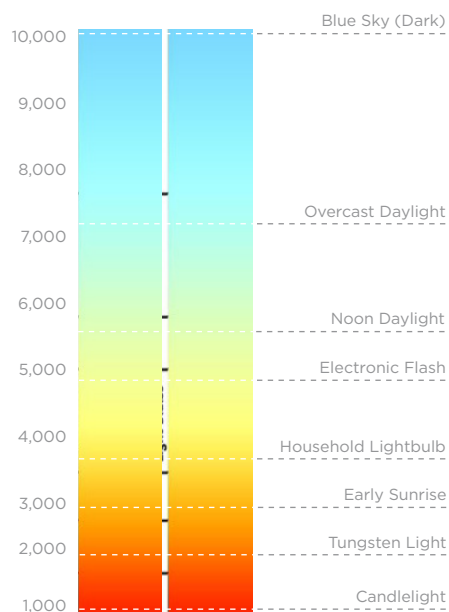
WHITE BALANCE

photograph the everyday

Kelvins

This is the measurement of color temperature in your image.

5000K is considered neutral



MAKING SENSE OF MANUAL MODE

© CLICK IT UP A NOTCH

WHITE BALANCE

photograph the everyday

Expodisc

1. Meter off subject to set ISO, shutter speed, & aperture
2. Set camera on custom white balance (may be called "preset")
3. Set lens to manual focus
4. Cover lens with the Expodisc
5. Move to stand where your subject will be or point the camera at the light source
6. Check your camera if it worked
7. Switch lens back to auto focus



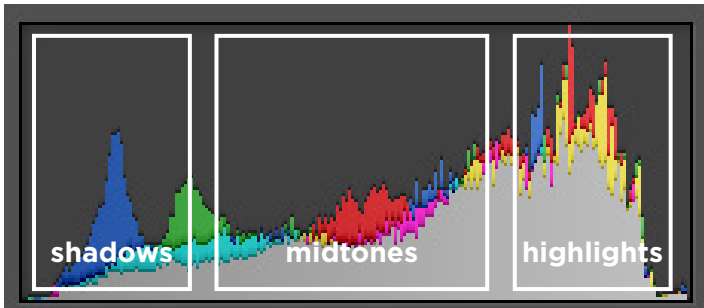
MAKING SENSE OF MANUAL MODE

© CLICK IT UP A NOTCH

HISTOGRAM

photograph the everyday

Avoid spikes to the right or left



MAKING SENSE OF MANUAL MODE

© CLICK IT UP A NOTCH

NOTES

photograph the everyday

MAKING SENSE OF MANUAL MODE

© CLICK IT UP A NOTCH

NOTES

photograph the everyday

MAKING SENSE OF MANUAL MODE

© CLICK IT UP A NOTCH

NOTES

photograph the everyday

MAKING SENSE OF MANUAL MODE

© CLICK IT UP A NOTCH